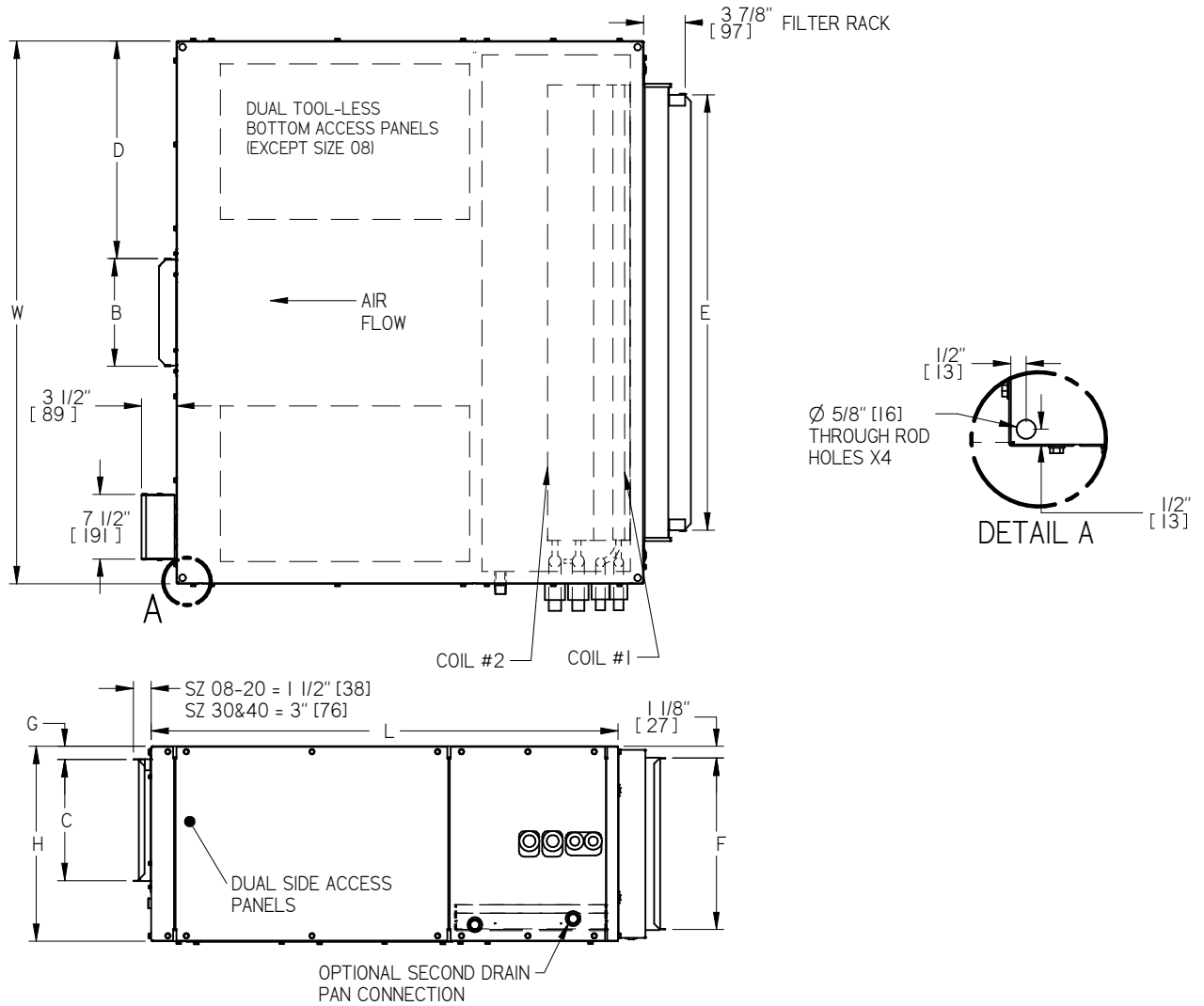


**LH COIL/DRIVE/CONTROL CONFIGURATION SHOWN**  
HANDING DETERMINED BY LOOKING AT INLET



UNIT SIZE	NOMINAL FAN FLOW CFM (L/S)	W in. (mm)	H in. (mm)	L in. (mm)	B in. (mm)	C in. (mm)	D in. (mm)	E in. (mm)	F in. (mm)	G in. (mm)
08	800 (378)	30 (762)	15 1/2 (394)	43 (1092)	12 (305)	10 (254)	9 (229)	20 1/4 (514)	13 1/4 (337)	2 3/4 (70)
12	1200 (566)	38 (965)			16 (406)	15 (381)	13 (330)	28 1/4 (718)		
16	1600 (755)	44 (1118)	19 (483)		17 (432)	40 1/4 (1022)	16 3/4 (426)	7/8 (22)		
20	2000 (944)	50 (1270)	25 (635)		18 (457)	9 (229)	41 1/4 (1048)	22 3/4 (578)	3 1/2 (89)	
30	3000 (1416)	52 (1321)	25 (635)	50 (1270)	34 (965)	18 (457)	9 (229)	41 1/4 (1048)	22 3/4 (578)	3 1/2 (89)
40	4000 (1888)	65 (1651)			48 (1219)		8 1/2 (216)	54 1/4 (1378)		

**NOTES:**  
1. NOMINAL FAN FLOW MEASURED IN CFM (L/S).



ALL METRIC DIMENSIONS ( ) ARE SOFT CONVERTED. IMPERIAL DIMENSIONS ARE CONVERTED TO METRIC AND ROUNDED TO THE NEAREST MILLIMETER.

<b>PROJECT:</b>		<b>BCHD</b> BLOWER COIL HORIZONTAL W DIRECT DRIVE
<b>ENGINEER:</b>		
<b>CUSTOMER:</b>		
<b>SUBMITTAL DATE:</b>	<b>SPEC. SYMBOL:</b>	
		TW 274761 04/01/2024

**STANDARD CONSTRUCTION:**

- 18 GAUGE GALVANIZED STEEL HOUSING
- INTERNAL INSULATION - FIBERGLASS 1" (25mm) THICK, MIN 1.5# DENSITY WHICH MEETS THE REQUIREMENTS OF NFPA 90A AND UL181
- REMOVABLE BOTTOM AND SIDE ACCESS PANELS - FULLY INSULATED
- SLIP AND DRIVE CONNECTIONS ON DISCHARGE AND INLET
- SLOPED GALVANIZED STEEL DRAIN PAN WITH 3/4" MALE NPT CONNECTION, WHICH MEETS THE REQUIREMENTS OF ASHRAE 62
- 9/16" HANGER ROD "THROUGH-BOLT" HOLES FOR SUSPENSION

**FAN & MOTOR ASSEMBLY:**

- FORWARD CURVED, DOUBLE WIDTH, DOUBLE INLET FAN, DYNAMICALLY BALANCED
- MINIMUM 0.1" W.G. (25 PA) EXTERNAL STATIC PRESSURE TO OPERATE.
- EC MOTOR WITH ECM SPEED CONTROLLER, 1 PHASE, 60 CYCLE.

**WATER COILS:**

- AHRI 410 CERTIFIED
- COILS HAVE COPPER TUBES WITH ALUMINUM FINNS, MANUAL AIR VENTS AND 20 GA. GALV STEEL CASINGS
- 1 OR 2 ROW HEATING (PRE/REHEAT), 3,4,6,8 ROW COOLING, UP TO 10 ROWS TOTAL
- LH COILS SHOWN, RH ALSO AVAILABLE. COILS ARE FIELD REVERSIBLE FROM LH TO RH.

**FILTERS:**

- FILTER RACK WITH BOTTOM AND SIDE QUICK RELEASE ACCESS DOORS
- 2" MERV 8 FILTERS STANDARD

**COIL CONFIGURATION:**

**2 PIPE SYSTEM:**

- HEATING ONLY
  - 1-ROW  2-ROW  3-ROW  4-ROW  6-ROW  8-ROW
- COOLING ONLY

- 3-ROW  4-ROW  6-ROW  8-ROW

**4 PIPE SYSTEM:**

- PREHEAT
  - 1/3-ROW  1/4-ROW  1/6-ROW  1/8-ROW  2/3-ROW  2/4-ROW  2/6-ROW  2/8-ROW
- REHEAT
  - 3/1-ROW  4/1-ROW  6/1-ROW  8/1-ROW  3/2-ROW  4/2-ROW  6/2-ROW  8/2-ROW

**PIPE ENTRY (LOOKING DOWNSTREAM):**

- RH  LH

**UNIT OPTIONS:**

**LINERS:**

- 1" SOLID METAL (SM1)
- 1" FIBER FREE (FF1)
- 1" FOIL BOARD (FB1)

**FILTERS:**

- 2" MERV 13

**ELECTRICAL:**

- 24V TRANSFORMER
- DISCONNECT SWITCH
- MOTOR FUSING
- CONTROL FUSING

**VALVE PACKAGE:**

- TCV TYPE:**
- 2 WAY

**CONTROL TYPE:**

- ON-OFF
- FLOAT
- MODULATING

**RETURN SIDE VALVE:**

- AUTOMATIC BALANCING VALVE

**SOURCE SIDE VALVE:**


- Y-STRAINER W/ BLOWDOWN AND PT PORTS

**ACCESSORIES:**

- STAINLESS STEEL DRAIN PAN
- SECONDARY DRAIN CONNECTION
- SPRING HANGER BRACKETS
- CONTROLS OPPOSITE TO COIL HAND
- HINGED QUICK RELEASE PANELS ON:
  - SIDE
  - BOTTOM
- SPARE FILTERS

- FRESH AIR INLET
  - LEFT HAND
  - RIGHT HAND
- MIXING BOX
  - REAR/TOP INLET
  - REAR/BOTTOM INLET
  - TOP/BOTTOM INLET
- OVERFLOW SAFETY FLOAT SWITCH
- DISCHARGE SILENCER
  - FG - FIBERGLASS
  - FC - FIBERGLASS CLOTH
  - PL - POLYMER LINER
- SEISMIC CERTIFICATION (OSP)

ALL METRIC DIMENSIONS ( ) ARE SOFT CONVERTED. IMPERIAL DIMENSIONS ARE CONVERTED TO METRIC AND ROUNDED TO THE NEAREST MILLIMETER.

<b>PROJECT:</b>			<b>BCHD</b> BLOWER COIL HORIZONTAL W DIRECT DRIVE
<b>ENGINEER:</b>			
<b>CUSTOMER:</b>		<b>274761</b>	
<b>SUBMITTAL DATE:</b>	<b>SPEC. SYMBOL:</b>	<b>04/01/2024</b>	

UNIT WEIGHT DATA							
LBS (KG)							
		UNIT SIZE					
		08	12	16	20	30	40
<b>BASE WEIGHT</b>		128 (58)	158 (72)	195 (89)	205 (93)	277 (126)	367 (167)
<b>COIL ROWS</b>	1 ROW DRY	8 (4)	9 (5)	11 (5)	13 (6)	17 (8)	19 (9)
	1 ROW WET	10 (5)	12 (6)	15 (7)	17 (8)	23 (11)	27 (13)
	2 ROW DRY	12 (6)	14 (7)	18 (9)	21 (10)	27 (13)	33 (15)
	2 ROW WET	16 (8)	19 (9)	25 (12)	29 (14)	39 (18)	47 (22)
	3 ROW DRY	17 (8)	20 (10)	26 (12)	30 (14)	39 (18)	49 (23)
	3 ROW WET	23 (11)	28 (13)	36 (17)	42 (20)	56 (26)	71 (33)
	4 ROW DRY	21 (10)	25 (12)	33 (15)	38 (18)	50 (23)	62 (29)
	4 ROW WET	29 (14)	35 (16)	46 (21)	53 (25)	72 (33)	90 (41)
	6 ROW DRY	29 (14)	36 (17)	47 (22)	53 (25)	72 (33)	89 (41)
	6 ROW WET	40 (19)	50 (23)	67 (31)	76 (35)	105 (48)	132 (60)
	8 ROW DRY	37 (17)	46 (21)	61 (28)	69 (32)	94 (43)	116 (53)
8 ROW WET	52 (24)	65 (30)	88 (40)	99 (45)	139 (64)	172 (79)	
<b>DISCHARGE SILENCER WEIGHT</b>		37 (17)	37 (17)	45 (20)	45 (20)	82 (37)	110 (50)

**UNIT WEIGHT DATA NOTES:**

1. BASE WEIGHT DATA IS IN POUNDS (KILOGRAMS).
2. BASE WEIGHT INCLUDES MOTOR(S) AND BLOWER(S).


COIL CONNECTION SIZES					
in. (mm)					
UNIT SIZE	1 ROW	2 ROW	3 & 4 ROW	6 ROW	8 ROW
08	7/8 (23)	7/8 (23)	7/8 (23)	7/8 (23)	7/8 (23)
12	7/8 (23)	7/8 (23)	7/8 (23)	7/8 (23)	7/8 (23)
16	7/8 (23)	7/8 (23)	7/8 (23)	7/8 (23)	7/8 (23)
20	7/8 (23)	7/8 (23)	7/8 (23)	7/8 (23)	7/8 (23)
30	1 1/8 (29)	1 1/8 (29)	1 1/8 (29)	1 1/8 (29)	1 1/8 (29)
40	1 1/8 (29)	1 1/8 (29)	1 1/8 (29)	1 1/8 (29)	1 1/8 (29)

ECM MOTOR					
UNIT SIZE	ECM H.P.	FULL LOAD AMPS			
		115V	208V	240V	277V
08	1/2	7.7	5	4.3	4.1
12	3/4	9.6	7.3	6.8	5.5
16	1	12.8	9.4	9.1	6.9
20	1	12.8	9.4	9.1	6.9
30	2 @ 3/4	19.2	14.6	13.6	11
40	2 @ 1	25.6	18.8	18.2	13.8

**ECM MOTOR NOTES:**

1. FLA FOR SZ 30 & 40 INCLUDE DUAL MOTORS.
2. ACTUAL NAMEPLATE AMPS MAY VARY, BUT WILL NOT EXCEED VALUES SHOWN.

ALL METRIC DIMENSIONS ( ) ARE SOFT CONVERTED. IMPERIAL DIMENSIONS ARE CONVERTED TO METRIC AND ROUNDED TO THE NEAREST MILLIMETER.

<b>PROJECT:</b>		 <b>BCHD</b> BLOWER COIL HORIZONTAL W DIRECT DRIVE
<b>ENGINEER:</b>		
<b>CUSTOMER:</b>		
<b>SUBMITTAL DATE:</b>		
<b>SPEC. SYMBOL:</b>		<i>TW</i> <b>274761</b> 04/01/2024